



KNIGHT[®]

AMERICA'S MUZZLELOADER



PRODUCT CATALOG

PEREGRINE



 **500**

Guaranteed MOA accuracy to 500 yards.

**THE NEXT
GENERATION
OF LONG-RANGE
MUZZLELOADERS**

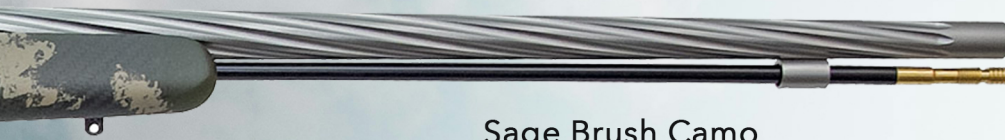


Jacob,
Wyoming USA





Made in the USA



Sage Brush Camo

RIFLE FEATURES

IGNITION

209 Bare Primer, Tungsten Carbide Sleeved Breech Plug

CALIBER

40 cal, .45 cal

TWIST RATE

1:16, 1:18

LENGTH OF PULL

14"

BARREL

28" 416 Stainless Green Mountain Helical Fluted Barrel

OVERALL LENGTH

46.25"

WEIGHT

7.4 lbs

SIGHTS

Scope Only

TRIGGER

Fully Adjustable Timney Trigger

STOCK

Custom Solid Carbn Fiber Target Stock, Sage Brush Camo

Mirroring the extraordinary speed of the peregrine falcon—the world's fastest bird—the Peregrine Muzzleloader sets the standard for velocity and performance in its class. This rifle achieves a muzzle velocity of up to 3000 feet per second and features a faster twist rate than most of its contemporaries, ensuring both rapid action and pinpoint accuracy. It sports a sleek 28" fluted barrel and a robust 100% carbon fiber stock. Crafted entirely in the USA, the Peregrine combines power, speed, and precision. Welcome to the next generation of muzzleloaders.



Extended Jag for easier cleaning



Bullet Sizer .40 cal only



www.muzzleloaders.com

MOUNTAINEER



Coyote
Stainless

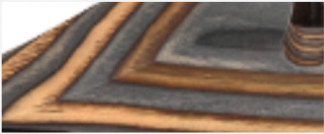
*all models are drilled & tapped for scopes
and available in stainless or nitride



Shadow Gray
Nitride



Forest Green
Stainless



Coming Soon:
Shady Camo



Guaranteed MOA accuracy to 200 yards.



**TOP-GRADE
LAMINATED
HARDWOOD**

TIMNEY USA
TRIGGERS

BOYDS™



Jacara Nitride



Made in the USA

RIFLE FEATURES

IGNITION

209 Bare Primer, Full Plastic Jackets, Musket Cap, #11

CALIBER

.50 cal

TWIST RATE

1:28

LENGTH OF PULL

13.75"

BARREL

27" 416 Stainless Steel Green Mountain Fluted Barrel

OVERALL LENGTH

45.5"

WEIGHT

8.5 lbs

SIGHTS

Adjustable Fiber Optics

TRIGGER

Fully Adjustable Timney Trigger

STOCK

Boyd's Jacara, Coyote, Shadow Gray, Forest Green or Shady Camo Stock

Continuing the Knight tradition of crafting the world's finest, safest, and most accurate blackpowder rifles, the classic Mountaineer stands out as a testament to superior craftsmanship. This rifle features ornate, individually-machined bolts, a Carbon Core ramrod, and stunning laminate stocks. Each detail contributes to its guaranteed precision, highlighted by a handcrafted, match-grade 27" fluted Green Mountain barrel. Emblematic of Knight's commitment to producing 100% American-made rifles, the Mountaineer excels in both performance and aesthetics, epitomizing the pinnacle of beauty, balance, and accuracy.



Extended Jag for easier cleaning



Available in Western Ignition



ULTRALITE



Green Web
Stainless

*all models are drilled & tapped for scopes
and available in stainless or nitride



Brown Web
Nitride



Gray Web
Stainless



Guaranteed MOA accuracy to 200 yards.



**WEIGHS JUST
6 POUNDS!**





Tan Web Nitride



Made in the USA

Tipping the scales at just 6 lbs, the Knight Ultra-Lite stands as one of the lightest muzzleloaders available. This rifle showcases the pinnacle of American craftsmanship with its ornate, individually-machined bolts and a streamlined loading process facilitated by its Carbon Core ramrod. It defines perfection with the elegant look and feel of its ultralight Kevlar stock selection. Featuring an Aluminum Bedding Block and a 24" contoured Green Mountain barrel, the Ultra-Lite guarantees pinpoint accuracy. Elevating blackpowder hunting with unmatched ease and distinctive style, the Ultra-Lite is a masterfully designed inline muzzleloader.

RIFLE FEATURES

IGNITION

209 Bare Primer, Full Plastic Jackets, Musket Cap, #11

CALIBER

.50 cal.

TWIST RATE

1:28

LENGTH OF PULL

13.5"

BARREL

24" 416 Stainless Steel Green Mountain Contoured, Free Floating Barrel

OVERALL LENGTH

41.75"

WEIGHT

6 lbs

SIGHTS

Adjustable Fiber Optics

TRIGGER

Fully Adjustable Timney Trigger

STOCK

Bell and Carlson Kevlar Reinforced, Tan, Gray, Brown, Green



Extended Jag for easier cleaning



Available in Western Ignition



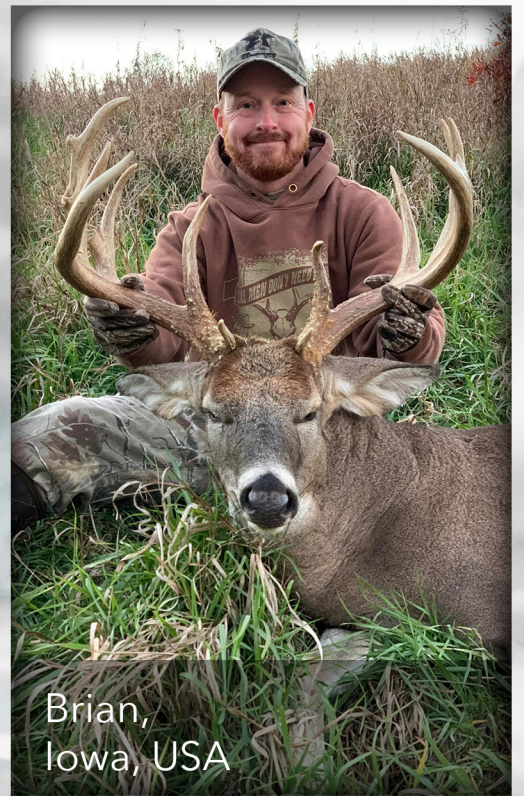
DISC EXTREME



**GETS THE JOB
DONE.
EVERY DAY,
EVERY TIME.**



Guaranteed MOA accuracy to 200 yards.



Brian,
Iowa, USA





Realtree Edge TH



Made in the USA

RIFLE FEATURES

IGNITION

Full Plastic Jackets,
Musket Cap #11

CALIBER

.52 cal.

TWIST RATE

1:26

LENGTH OF PULL

14.25"

BARREL

26" 416 Stainless Steel Barrel

OVERALL LENGTH

45"

WEIGHT

7.8 lbs

SIGHTS

Adjustable Fiber Optic Sights

TRIGGER

Fully Adjustable Timney Trigger

STOCK

Thumbhole or Straight
in Realtree Edge



Realtree Edge
Straight

The DISC Extreme is a robust workhorse, proven to perform reliably in even the most demanding environments. This muzzleloader highlights the essence of American craftsmanship with its individually machined bolts and Carbon Core ramrods, complemented by a durable synthetic stock dipped in Real Tree Camo for ultimate concealment and style. With its handcrafted 26" Green Mountain barrel, the DISC Extreme ensures exceptional quality and unmatched accuracy, making it a true embodiment of perfection in every shot.



LOADING & SHOOTING ACCESSORIES

FULL PLASTIC JACKET™

> MHS Extreme®, Vision®, LRH®, DISC

Extreme®, W209®, BH®, TK2000®, USAK® (mfg. after 2003)

> Use 209 primers as a weather-tight ignition system

> 100 pack

SKU: M901104



ORIGINAL DISC™

> Allows you to shoot 20 shotgun primers in an Original DISC™ rifle

> 100 pack

SKU: M901107



PRIMER LOADING TOOL

> Easily press 209 primers into Full Plastic Jackets™

SKU: M900103



BLACK ANODIZED

BULLET LOADING TIP

> Used to protect polymer-tipped bullets while loading

> Attaches to ram rods with 10-32 threads

SKU: M900068



SPEED SHELL TUBE

> Accommodates 3 .45/.50 pellets and a sabot bullet

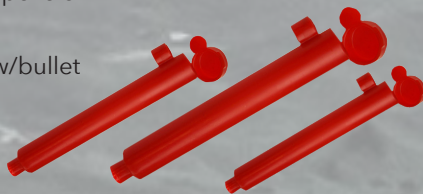
> Also used for .52 caliber w/bullet

> Fiber-Lite® construction

> Not divided

> 3 pack

SKU: M900048



SPEED SHELL

> Divided; holds a powder charge and a sabot bullet

> Fiber-Lite® construction

> Also holds 3 Triple 7 pellets

> 2 pack

SKU: M900050



PREMIUM SPEED LOADER

> Holds Powder Charge and

Saboted Bullet for quick reloading

> Measure on one end, Holds FPJ or Bare primer, doubles as bullet starter

> 2 Pack

SKU: M900051



ACCESSORY STARTER KIT

> .50 cal

SKU: M901601 - .50 CAL



ALUMINUM RAM ROD

> Aluminum construction

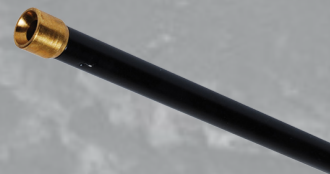
> .50 caliber

> Brass tip with 10-32 thread

SKU: M900084 - 22" LONG

SKU: M900085 - 24" LONG

SKU: M900088 - 26" LONG



EASTON CARBON CORE™

RAMROD

> Aluminum 7075 Full Metal Jacket Shaft with a Carbon Core

> 60% more rigid than standard ramrods

> Easier and faster reloading

> Improved extendable end

> Cleaning Jag included

SKU: M900084F - 22" - .50 CAL

SKU: M900085F - 24" - .50 CAL

SKU: M900088F - 26" - .50 CAL

SKU: M900092F - 27" - .50 CAL



SOFT RIFLE CASE

> Padded with embroidered Knight® logo

> Fits Scoped Rifles

> Floatable



LOADING & SHOOTING ACCESSORIES

POWER PALM SAVER

> No more sore spot on the palm of your hand!

> Designed to slide over the end of your ramrod to help with loading the bullet.

> Made of a light weight composite material for easy storage and carrying.

SKU: M900030



CAPPER/DECAPPER FULL PLASTIC JACKET

> Designed to easily load and unload your RPJ primers.

Wolverine, Bighorn or any plunger style model

> Fiber-Lite®

SKU: M900036



BULLET STARTER

> Designed to help start the bullet down the muzzle

> T-Shaped handle

> Fiber-Lite construction

SKU: M900071



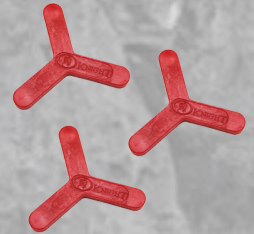
BARE 209 PRIMER CAPPER

> Newly designed to easily load and unload

your 209 bare primers

> 3 Pack

SKU: M900035



BALL BULLET STARTER

> Designed to help start the bullet down the muzzle

> Ball-shaped handle

> Fiber-Lite® construction

SKU: M900072



PRIMER CADDY

> Holds 9 primers

> Keychain & carabiner included

> Keeps your primers safe while on the hunt

SKU: M900037



BRASS POWDER MEASURE

> Adjustable from 30 to 150 grains for consistent powder measuring

> Solid brass

> One-piece measure

SKU: M900117



HAMMER SPURS

> Steel : KRB®, Shadow®

SKU: M900221

Blued: KP1 - **SKU: M900220**



WITH FLASK

(1) Place measure inside unique spout on flask

(2) Push button and shake

(3) Release button

SKU: M900100



RED HOT™ NIPPLE

> Double taper design ensures positive firing and prevents caps from sticking.

> Standard threads fit all muzzleloaders that require a nipple with 1/4-28, M6 x 0.75 mm, or M6 x 1.0 mm threads

> Knight® Rifles use 1/4-28

> Stainless steel

SKU: M900012 - Musket Cap 1/4-28

SKU: M900013 - #11 Cap 1/4-28

SKU: M900015 - #11 Cap M6 x 0.75 mm

SKU: M900017 - #11 Cap M6 x 1.0 mm



CAPPERS

SKU: M900028

> Musket, black with lanyard

SKU: M900029

> #11, brass with lanyard



BREECH PLUG GREASE

> Anti-seize agent, 3/4 oz. tube

SKU: M900026



REPLACEMENT PARTS

BREECH PLUGS

SKU: M900019

> Original DISC™, hex head

SKU: M900021

> W209®, TK®, MK®, LK®, BK®, BH®, LH®, USAK®, hex head, Full Plastic Jacket™

SKU: M900023

> .50 cal., LK®, MK®, BK®, LH®, BH®, TK®, USAK®, hex head, #11 or Musket Cap

SKU: M900024

SKU: M900024V - Vented

> KP1®, DISC Extreme®, Vision®, LRH®, MH®, Elite®, hex head, Full Plastic Jacket™

SKU: M900032

> .52 cal. Bighorn®, #11 or Musket Cap

SKU: M900634

> .52 cal. Bighorn®, Full Plastic Jacket™

SKU: M900611

> .50 cal. Western DISC™, #11 or Musket Cap

SKU: M900018

> .45, .50, .52 cal. Mountaineer®, Full Plastic Jacket™

SKU: M900020

> .45, .50, .52 cal. Mountaineer® bare primer

SKU: M900046

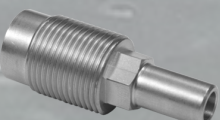
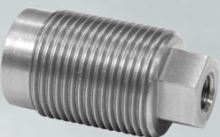
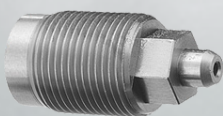
> KP1®, Vision® 209 Bare Primer

DISC™ EXTREME CONVERSION KIT

> Fits original DISC™

> Includes breech plug, bolt assembly, 20 Full Plastic Jackets™, and bolt set screw

SKU: M900607



PREMIER WESTERN CONVERSION KIT

> Fits Mountaineer® and Ultra-Lite®

> Converts to shoot #11 and Musket Cap

> Legal in WA, OR, and ID

> .45, .50, and .52 caliber

> Includes Jeweled Bolt

SKU: M900626



WESTERN CONVERSION KIT

> Fits Original DISC™ and DISC Extreme®

> Converts to shoot #11 and Musket Cap

> Legal in WA, OR, and ID

> .45, .50, and .52 caliber

SKU: M900624



EXTREME 209 PRIMER CONVERSION KIT

> Converts Knight® Rifles to shoot 209 primers

> Includes breech plug, combo tool, hammer assembly, Full Plastic Jackets™, and capper/decapper

SKU: M900603

> .50 caliber: LK®, Wolverine®, USAK®, BH®, TK2000®, BK®, MK85® (or pre-1995 .54 cal models)

SKU: M900604

> Pre-1995 .54 caliber LK®



209 BARE PRIMER CONVERSION KIT

> Fits DISC Extreme® and LRH®

> Converts to shoot 209 Bare Primer

> .45, .50, and .52 caliber

SKU: M900608



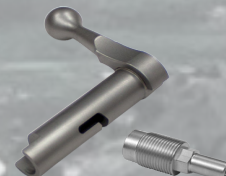
MOUNTAINEER 209 BARE PRIMER CONVERSION KIT

> Fits Mountaineer

> Converts to shoot 209 Bare Primer

> .45, .50, and .52 caliber

SKU: M900602



ULTRA-LITE 209 BARE PRIMER CONVERSION KIT

> Fits Ultra-Lite

> Converts to shoot 209 Bare Primer

> .50 caliber

SKU: M900606



SHOTGUN ACCESSORIES

SHOT WADS WITH OVERSHOT WADS

- > 20 pack
- > Each pack has twenty 3.5" shot wads with cork overshot wads

SKU: M900145



CHOKE TUBES

- > Fits TK2000

SKU: M909089 - Extra Full .722



RED HOT™ MAGNUM LEAD SHOT

- > Chilled Lead
- > 3.5 lbs.

SKU: M900614 - #4 shot

SKU: M900615 - #5 shot

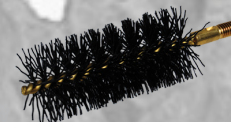
SKU: M900616 - #6 shot



NYLON SHOTGUN BRUSH

- > 10-32 threads

SKU: M900112

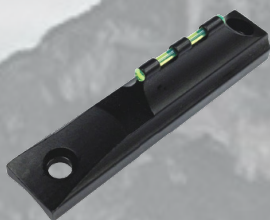


SIGHTS, RINGS, & BASES

FIBER OPTIC SIGHTS

SKU: M900175 - Front

- > Blued
- > Standard one-piece metal
- > Green bead
- > Fits all Knight® Rifles



SKU: M900179 - Front and Rear

- > Blued
- > Williams® gun sight
- > High visibility green beads and blades
- > Green front / red rear sight
- > Fits all Knight® Rifles



20 MOA PICATINNY BASE

- > Blued
- > Fits: DISC Extreme®, Mountaineer® and Ultra-Lite

SKU: M900733



LEUPOLD SCOPE BASES AND RINGS

SKU: ML49901

- > Standard 1" Medium Rings



SKU: ML49959

- > Standard 30 mm High Rings



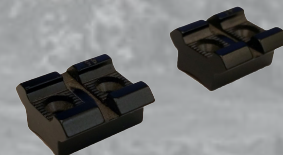
SKU: ML50028

- > Standard Remington
541 Mounts



SKU: ML56503 - Blued

- > Rifleman Aluminum Scope Mounts



VORTEX SCOPE BASE AND RINGS

- > Black
- > Fits Picatinny and Weaver bases

SKU: MVPRINGH - 1"



TALLEY SCOPE BASE AND RINGS

- > Black
- > Fits KP1® Knight® Rifles only.

SKU: M900778 - 1"



CLEANING ACCESSORIES

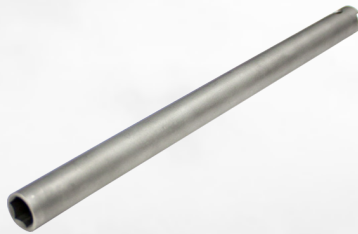
COMBO TOOLS

SKU: M900134 - 9.50"

> Fits: Mountaineer®, DISC™, W209®, BH®, TBLT®, Vision®, Shadow®, KP1®

> Hex head

> Ideal for scoped rifles



SKU: M900977S

> Hex head

> For Musket Cap and #11



BRASS CLEANING JAG

WITH EXTENSION

> Connect to your ramrod to aid in barrel cleaning

> 10-32 threads



SKU: M900039 - .45 cal

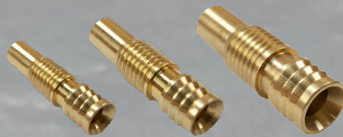
SKU: M900040 - .50 cal

SKU: M900038 - .52 cal

REPLACEMENT JAGS

> Connect to your ramrod for Easier and faster reloading

> Ultimate Tip



SKU: M900045UT - .45 cal

SKU: M900050UT - .50 cal

SKU: M900052UT - .52 cal

CLEANING PATCHES

> Perfect for pre-shooting preparation, regular cleaning, and maintenance

> Dry cleaning patches

SKU: M900099 - 100 Pack

SKU: M900101 - 300 Pack



KNIGHT EZ CLEAN

> Quick and simple way to clean any muzzleloader

> Good for swabbing between shots

SKU: M901255 - EZ Clean Saturated



BRASS BORE BRUSH

> Breaks up black powder residue from the bore

> Fits Ram Rod

> 10-32 threads



SKU: M900073 - .45 cal

SKU: M900090 - .50 cal

SKU: M900087 - .52 cal

COTTON BORE SWABS

> 10-32 threads

> 3 Pack

> .50 cal and .52 cal



SKU: M900089

BORE BRUSH KIT

> Includes 1 cotton bore swab, 1 fiber brush and 1 brass brush

> 10-32 threads

> .50 caliber



SKU: M900104

CLEANING BRUSH KIT

> Includes 1 brass brush for cleaning breech plug threads, hammer and bore

> 10-32 threads

SKU: M900074 - .45 cal

SKU: M900095 - .50 cal



KNIGHT® OIL

> Lubricates to protect and reduce friction between moving parts

> With rust inhibitor

SKU: M901210 - 4 oz

SKU: M901215 - 6 oz aerosol

SKU: M901214 - 10 oz aerosol



SOLVENT CONCENTRATE

SKU: M901250 - 4 oz

> Removes grease and oil grit and softens black powder residue

> Removes fouling

SKU: M901252 - 6 oz

> Includes small parts basket and brush



CLEANING PACKS

- > Includes 1 fiber bore brush, 1 brass bore brush, 50 cleaning patches, 1 tube of breech plug grease, 1 bottle of Knight® Oil with rust inhibitor, and 1 bottle of solvent concentrate
- > 10-32 threads



SKU: M900883 - .45 cal

SKU: M900881 - .50 cal

SKU: M900882 - .52 cal

KNIGHT APPAREL



KNIGHT LOGO T-SHIRT

"Light as a Feather, Deadly as Hell" > Sizes L - 3XL



KNIGHT ULTRA-LITE T-SHIRT

"Light as a Feather, Deadly as Hell" > Sizes L - 3XL



KNIGHT NMLA TROPHY T-SHIRT

"Winner of NMLRA Accuracy Competition 6 Years in a Row" > Sizes L - 3XL



KNIGHT LOGO T-SHIRT

> Sizes L - 3XL



SKU: MHATBRP Black Trucker Hat with Red Stitched Patch

SKU: MHATBGP Black Trucker Hat with Gray Stitched Patch



KNIGHT RIFLES CAPS



KNIGHT BLACK & GREY SWEATSHIRT

> Sizes L - 3XL



KNIGHT BLACK SWEATSHIRT

> Sizes L - 3XL

BULLETS & SABOTS

BLOODLINE SEGMENTING EXPANSION BULLETS

KNIGHT BLOODLINE® BULLETS

> All Bloodlines are sabot come in packs of 20

> Leveraging cutting-edge ballistic technology, Knight Rifles introduces the Bloodline bullets, designed for unparalleled expansion and precision. Each bullet, crafted individually on a CNC lathe, features a unique 6:1 segmenting design and doubled knurling for stability, ensuring devastating performance and optimized ballistic coefficients for unmatched accuracy and increased blood trails.



.50 CALIBER

SKU: M900541

SKU: M900543

SKU: M900544

SKU: M900559

SKU: M900563

SKU: M900562

SKU: M900545



.52 CALIBER

.50 caliber 220 grain

.50 caliber 275 grain

.50 caliber 300 grain

.52 caliber 220 grain

.52 caliber 275 grain

.52 caliber 300 grain

.54 caliber 325 grain



.54 CALIBER

Saboted

Saboted

Saboted

Saboted

Saboted

Saboted

Saboted

KNIGHT RED HOT® BULLETS

> All Red Hots are sabot and come in a pack of 20

> Knight Rifles' Red Hot bullets set the standard in the industry with their all-copper design, offering superior expansion and maximum damage. Engineered for deadly performance at both high and low velocities, these bullets expand to twice their original diameter, creating six razor-sharp petals that slice through game without fragmenting, ensuring deep penetration and consistent shot-to-shot accuracy.



.45 CALIBER

SKU: M900578

SKU: M900580

SKU: M900590

SKU: M900591

SKU: M900583

SKU: M900582

SKU: M900584

SKU: M900586

.45 caliber 175 grain

.45 caliber 195 grain

.50 caliber 250 grain

.50 caliber 300 grain

.50 caliber 350 grain

.52 caliber 275 grain

.52 caliber 350 grain

.52 caliber 375 grain



.52 CALIBER

Saboted

Saboted

Saboted

Saboted

Saboted

Saboted

Saboted

Saboted

HYDRA CON™ BULLETS

> All Hydra Cons come in packs of 10

SKU: M900561

> .50 cal., 440 grain

> Legal in Western States

> Unequaled expansion

SKU: M900566

> .52 cal, 530 grain

> Legal in Western States

> Unequaled expansion



> Hydra-Con™ bullets represent a revolutionary advancement in bullet technology, designed specifically for muzzleloader and Sharps type firearms. Crafted from pure lead and bore-sized for precision, these conical bullets offer unparalleled performance for the discerning hunter seeking the cutting edge in muzzleloading projectiles.

BOAT TAIL BULLETS BY BARNES®

> All Boat Tail Bullets are EZ Load™ sabot and come in packs of 20



SPITZER BOAT TAIL

POLYMER TIP BOAT TAIL

EZ LOAD™

SKU: M900592

SKU: M900593

SKU: M900594

SKU: M900595

.50 caliber 245 grain

.50 caliber 285 grain

.50 caliber 250 grain

.50 caliber 290 grain

Spitzer

Spitzer

Polymer Tip

Polymer Tip

> Barnes Spit-Fire TMZ muzzleloader bullets redefine the standards of accuracy and effectiveness for black powder rifles. Featuring a 100% copper composition with a spitzer boat-tail design and a polymer tip, these bullets deliver flat trajectories and remarkable penetration. Engineered to expand up to double their size while retaining nearly 100% of their weight, they ensure optimal terminal performance and humane kills. The snug-fitting sabot enhances consistency, preventing gas blow-by and promoting tight groupings, making these bullets a top choice for in-line muzzleloaders.

BULLETS & SABOTS

JACKETED BULLETS BY HORNADY®

> All Bullets are saboted and come in packs of 20

- SKU: M900185** .50 caliber 240 grain Green Sabot
- SKU: M900184** .50 caliber 300 grain Black Sabot
- SKU: M900183** .50 caliber 260 grain Black Sabot



> Hornady Jacketed muzzleloader bullets bring high-performance to the forefront, making them ideal for today's advanced muzzleloaders like your Knight Rifle. Featuring the renowned Hornady XTP jacketed hollow point, these bullets are tailored for black powder rifle use. The design incorporates a sabot that efficiently separates upon exiting the muzzle, ensuring precision and impact. Optimized for both accuracy and terminal performance, these bullets are crafted to deliver exceptional results in the field.

LEAD BULLETS BY HORNADY®

> All Bullets are saboted and come in packs of 20

- SKU: M900203** .50 caliber 260 grain Black Sabot
- SKU: M900504** .50 caliber 310 grain Black Sabot



> These bullets are expertly crafted to meet the demands of modern high-performance muzzleloaders, including your Knight Rifle. Specifically engineered for black powder rifles, these bullets feature a .50 caliber black sabot that efficiently sheds upon exit, enhancing accuracy and impact. Ideal for various hunting applications, give these lead muzzle-loading bullets a shot on your next hunting adventure!



BLACK TIP BULLETS

- SKU: M900597** .50 caliber 250 grain Polymer Tip
- SKU: M900598** .50 caliber 275 grain Polymer Tip
- SKU: M900599** .50 caliber 300 grain Polymer Tip

> The Black Tip Muzzleloader Bullets are the latest polymer tipped muzzleloading bullet. The Black Tip has proven itself to be extremely accurate while remaining dependable with the ability to deliver devastating down range power!

SABOTS

- SKU: M900116** .45 caliber .400 bullet dia. High Pressure
- SKU: M900118** .45 caliber .400 bullet dia. Smooth Sabot
- SKU: M900119** .54 caliber .50 bullet dia. High Pressure
- SKU: M900126** .50 caliber .452 bullet dia. EZ Load™
- SKU: M900127** .50 caliber .44 bullet dia. High Pressure
- SKU: M900128** .50 caliber .452 bullet dia. High Pressure
- SKU: M900136** .50 caliber .458 bullet dia. High Pressure
- SKU: M900137** .50 caliber .452 bullet dia. EZ Load™ BT
- SKU: M900138** .52 caliber .458 bullet dia. High Pressure BT
- SKU: M900139** .52 caliber .475 bullet dia. High Pressure BT



FTX BULLETS BY HORNADY®

> All Bullets are saboted and come in packs of 20

- SKU: M900540** .52 caliber 325 grain Gray Sabot
- SKU: M900547** .50 caliber 325 grain Red Sabot



> Hornady FTX Muzzleloader Bullets redefine innovation with their patented Flex Tip Technology. Upon impact, the soft tip compresses into the bullet, initiating rapid and extensive expansion at a variety of velocities—ideal for muzzleloader hunting. This groundbreaking design, coupled with the InterLock® Ring, ensures maximum weight retention and deep penetration, while the ballistically efficient secant ogive and specially engineered jacket promote stability, flat trajectories, and remarkable accuracy.

SUPER SHOCK BULLETS



- SKU: M900448** .45 caliber 240 grain Saboted
- SKU: M900449** .50 caliber 250 grain Saboted

> The Super-Shock Muzzleloader Bullets are designed for use with modern muzzleloaders, these bullets are designed to break 4 blades outward away from the main wound channel while the base continues through for deeper penetration.



KNIGHT[®]
AMERICA'S MUZZLELOADER

Knight Rifles. All Rights Reserved. No part of this catalog may be reproduced in any form without written permission from Knight Rifles. Policies, item availability, manufacturer's specifications and prices are subject to change without notification. RELEASE, ASSUMPTION OF RISK, AND WAIVER OF LIABILITY AND INDEMNITY AGREEMENT. Every buyer of Knight Rifles merchandise warrants that he can legally purchase the merchandise in his place of residence and that he is in compliance with all Federal, State and Local laws related to his purchase from Knight Rifles.

213 DENNIS ST, ATHENS TN 37303 (423) 920-2774